

# Helpman LEX 14-7RI-230V

## Specifications

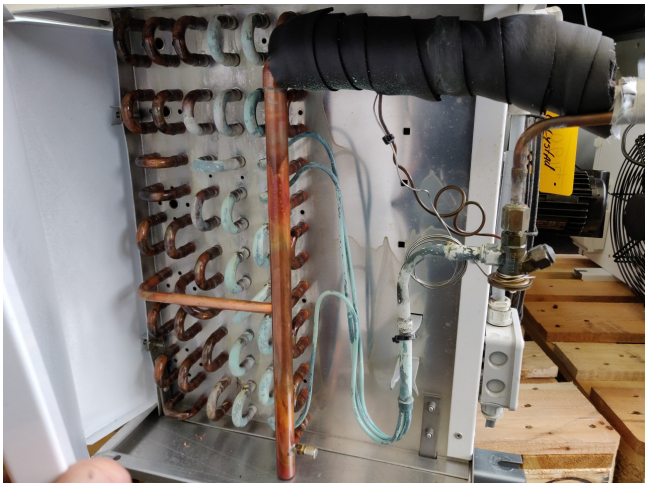
Brand	Helpman
Type	LEX 14-7RI-230V
kW	6
Refrigerant	Freon
Number of Fans	1
Fin Space in mm	7
Defrosting	None
m <sup>3</sup> /h	3.540
Sizes	970x692x710mm
Remarks	YOB 2006
Volume	8dm <sup>3</sup>
Weight	46kg
Stock	1



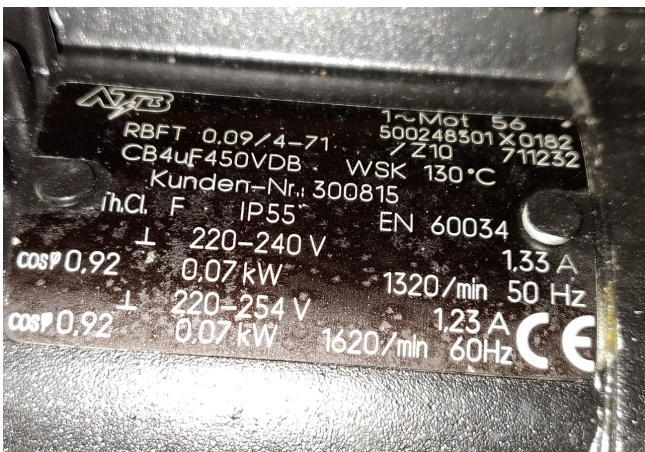
## Description

### Used Helpman LEX 14-7RI-230V

Used and in very good condition blow-through Helpman Lex 14-7RI-230V evaporator with electric defrosting. 1 fan, 0,07 kW and 1320 RPM, diameter 400 mm, 3.540 m<sup>3</sup>h, 46kg, 8dm<sup>3</sup>.  
"\*Why choose for HOSBV? Were not only the largest used refrigeration specialist in Europe, but also, we deliver all equipment including an extensive test, warranty and industrial cleaning. Optional we can arrange shipment and export documents."



<b>HELPMAN</b> Apparatfabriek Helpman BV. Peizerweg 97, 9727 AJ Groningen (NL) Tel.: ++3150 521 7555; Fax: ++3150 526 4878 e-mail: info@helpman.com/www.helpman.com			
Type	LEX-14-7RI-230V		
Serial number	806011-H22216-02602		
Refrigerant	R22/R134A/R404A/R401B/R407C/R417A/R507A		
Operating temp (TS)	-55/63	°C min/max	Voltage 230/50/1
Design pressure (PS)	-1/25	Bar min/max	Year 2006
Total internal volume	8,0	L	CE
Weigh (empty)	46	Kg	



## Nominal Capacities (kW)

Cooler type	R 22 frosted DT <sub>1</sub>	R 134a frosted DT <sub>1</sub>	R 404A frosted DT <sub>1</sub>	For reference only dry conditions DT <sub>1</sub>		
				R 22	R 134a	R 404A
<b>Fin spacing 4 mm</b>						
LEX 2 - 4	1.5	1.3	1.5	1.3	1.1	1.3
LEX 4 - 4	1.9	1.5	1.8	1.7	1.3	1.6
LEX 6 - 4	2.8	2.4	2.8	2.4	2.1	2.5
LEX 8 - 4	4.7	4.1	4.7	4.1	3.5	4.1
LEX 10 - 4	4.7	4.4	4.8	4.1	3.8	4.2
LEX 12 - 4	5.9	5.6	6.2	5.1	4.9	5.4
LEX 14 - 4	6.5	6.4	7.1	5.7	5.6	6.2
LEX 16 - 4	8.7	8.4	9.3	7.5	7.3	8.1
LEX 18 - 4	9.7	8.7	9.8	8.5	7.6	8.6
LEX 20 - 4	12.8	10.8	12.7	11.2	9.4	11.0
LEX 22 - 4	16.1	13.0	15.4	14.0	11.3	13.4
LEX 24 - 4	20.0	16.1	19.2	17.4	14.0	16.7
LEX 26 - 4	26.0	23.0	26.0	22.6	20.0	22.6
LEX 28 - 4	32.8	29.0	33.2	28.5	25.2	28.9
LEX 30 - 4	40.3	32.5	38.5	35.0	28.3	33.4

## Fin spacing 7 mm

LEX 2 - 7	1.3	1.2	1.3	1.1	1.0	1.2
LEX 4 - 7	1.7	1.4	1.7	1.5	1.2	1.4
LEX 6 - 7	2.5	2.2	2.5	2.2	1.9	2.2
LEX 8 - 7	4.1	3.7	4.3	3.6	3.3	3.7
LEX 10 - 7	3.7	3.6	4.0	3.2	3.2	3.5
LEX 12 - 7	5.0	4.9	5.3	4.4	4.3	4.6
LEX 14 - 7	5.5	5.5	6.0	4.8	4.8	5.2
LEX 16 - 7	7.4	7.3	8.0	6.4	6.3	7.0
LEX 18 - 7	8.5	7.8	8.8	7.4	6.8	7.6
LEX 20 - 7	11.4	10.0	11.4	9.9	8.7	9.9
LEX 22 - 7	14.5	12.4	14.3	12.6	10.7	12.4
LEX 24 - 7	18.1	15.6	17.8	15.7	13.5	15.5
LEX 26 - 7	22.8	21.2	23.4	19.8	18.4	20.4
LEX 28 - 7	28.5	26.5	29.3	24.8	23.0	25.5